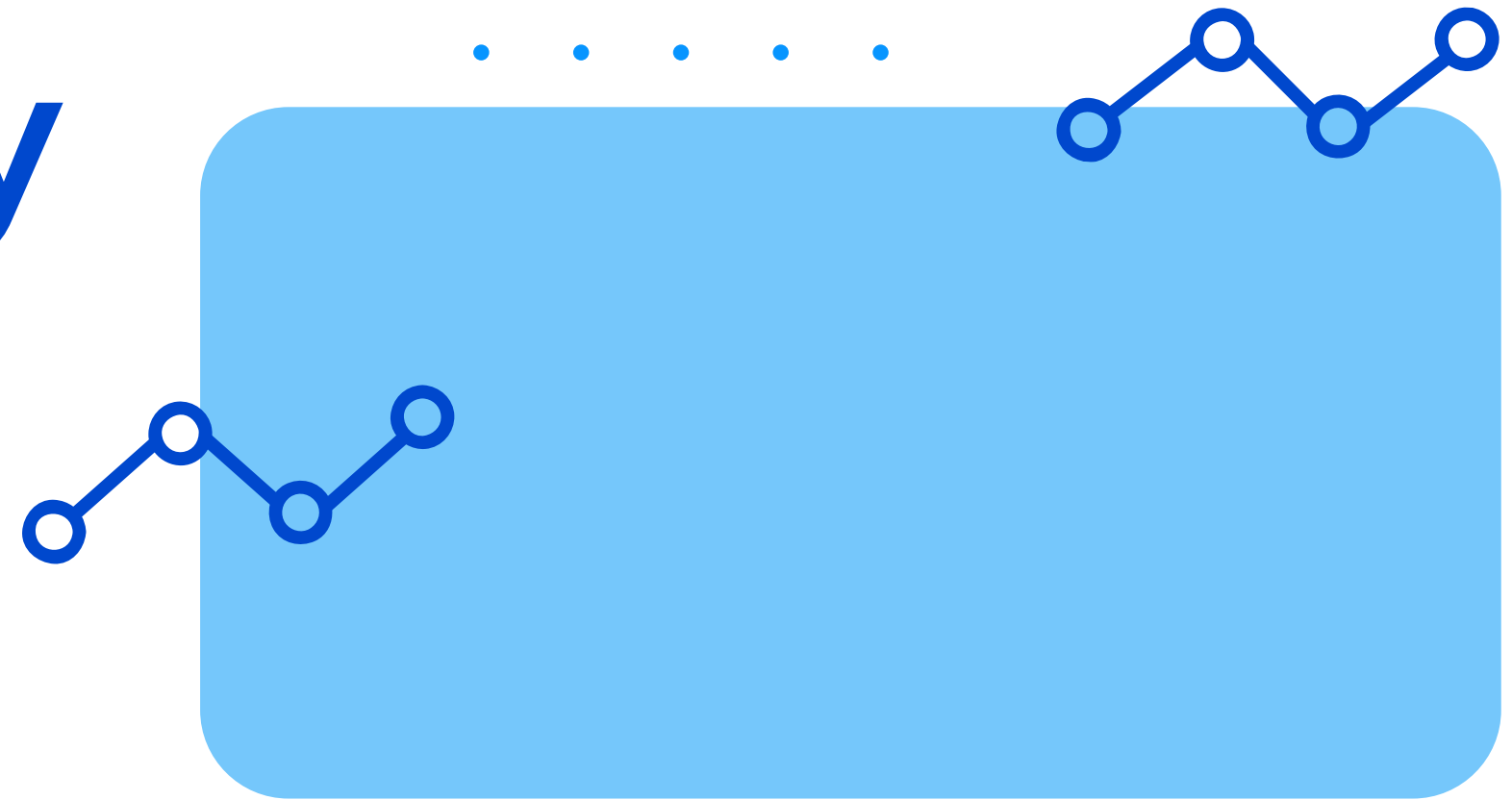


# ISLA Growth Survey Results:

Key findings to guide  
our path forward



**We listened.**

**We learned.**

**Now we're ready  
to take the next  
step forward...**

**together.**



# Growth Summary + Recap

## Full Capacity

The ISLA community has grown considerably in recent years.

We have reached full capacity at our current campus.

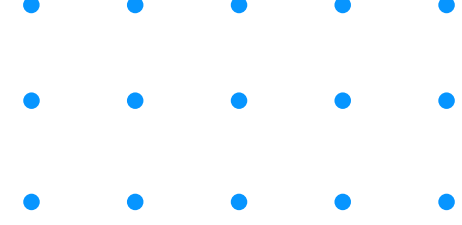
## Demand Increase

The demand for high quality Spanish immersion and International Baccalaureate programs in the Twin Cities has been steadily increasing.

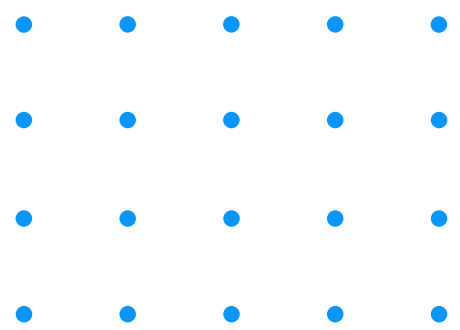
## Unique Opportunity

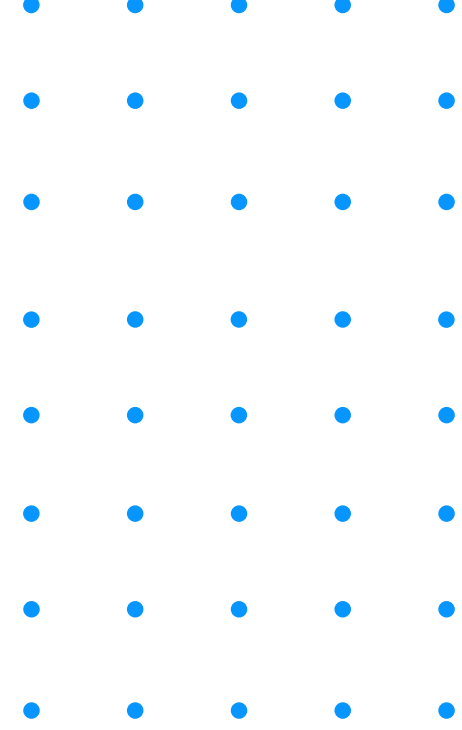
Due to its proximity to the new light rail, we've received an offer on our current campus.

The offer presents a rare opportunity to move to a larger campus to better serve our mission, current students and community demand.

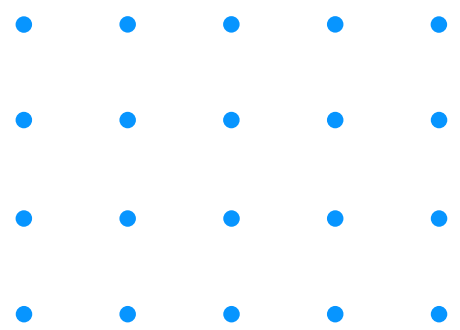


**Earlier this year, we asked the ISLA community to complete a survey to gain valuable feedback on the benefits and challenges to expanding and moving to an out-of-district campus.**





# Key Findings





The community sees  
**three big benefits**  
to expanding and moving.

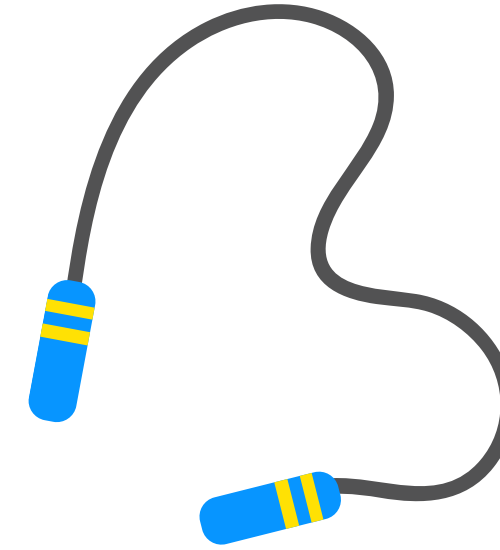
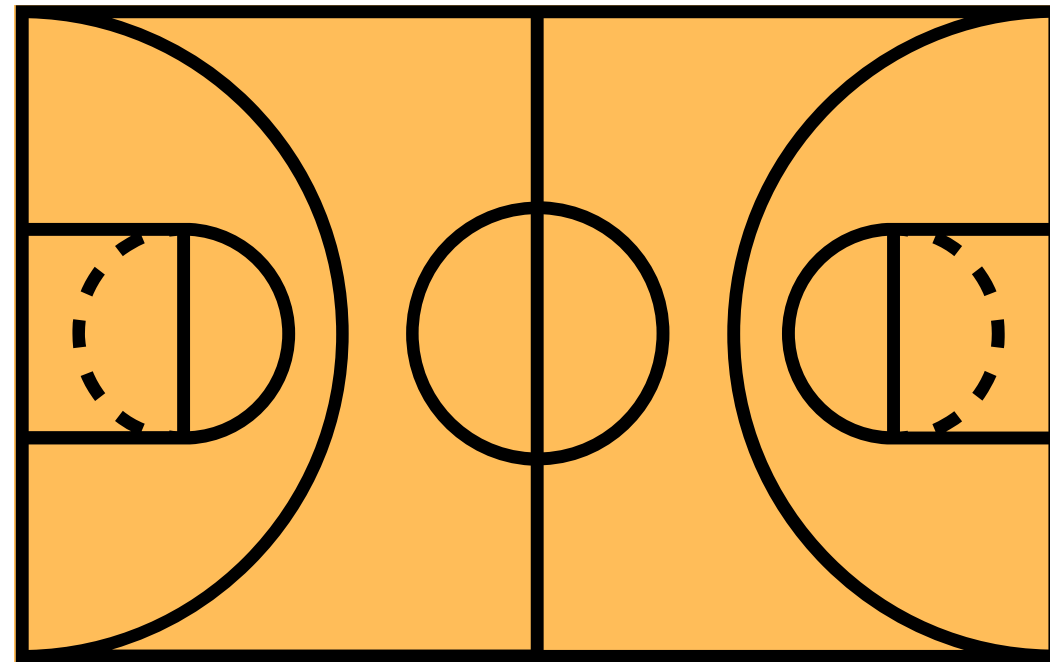


95%

Respondents who said they would be  
**MORE LIKELY** to support the growth proposal if  
key facility improvements could be addressed.



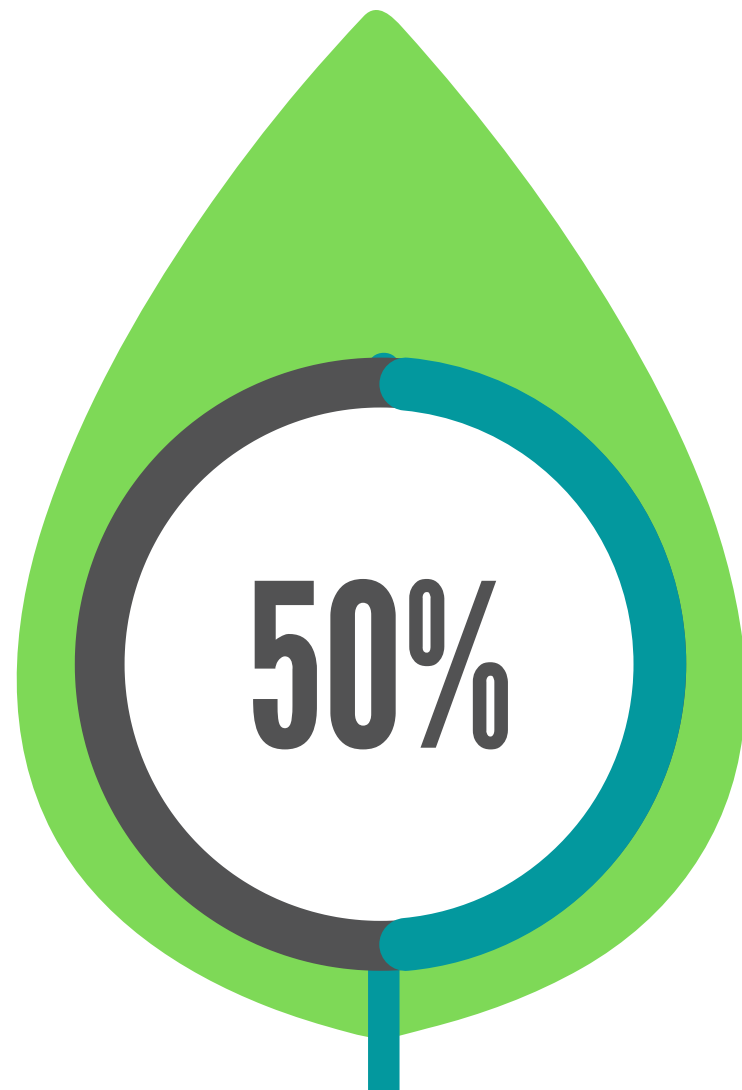
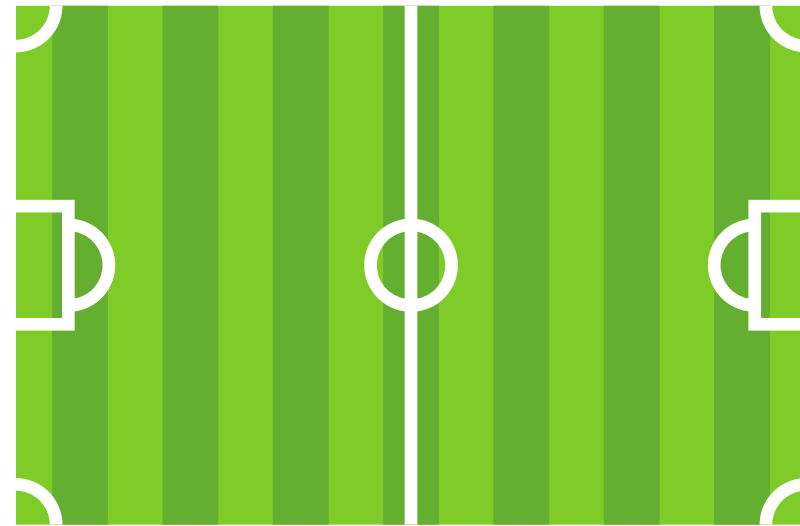
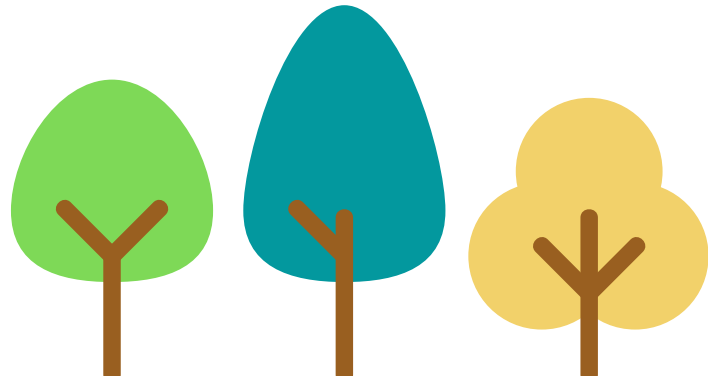
# #1: Dedicated gym space.



Ranked this as the  
**#1 improvement**  
they'd like to see in a new campus.



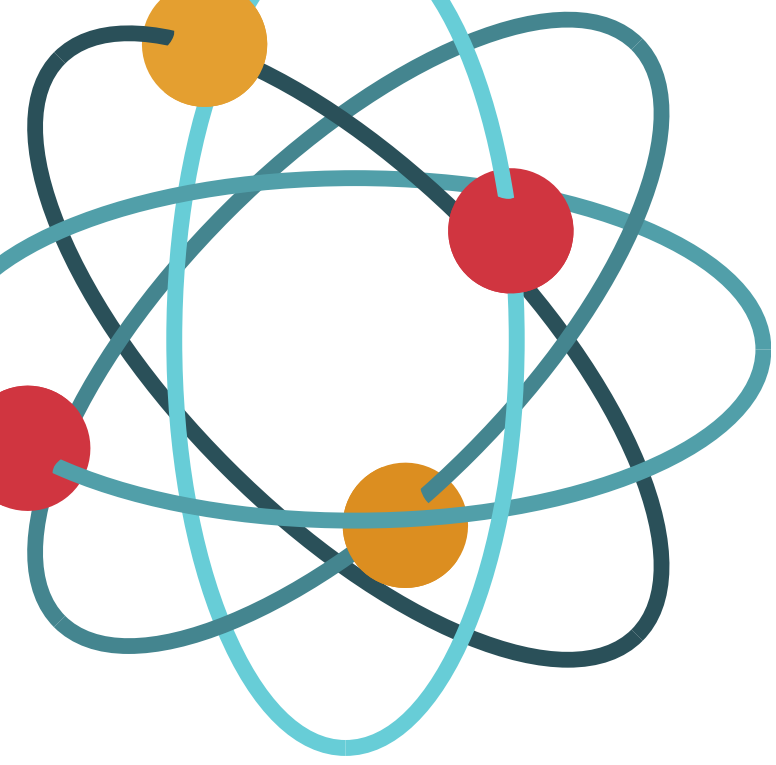
# #2: Enhanced green space.



Ranked this as the  
**#1 or #2 improvement**  
they'd like to see in a new campus.







# #3: Exploration or Makerspace Lab



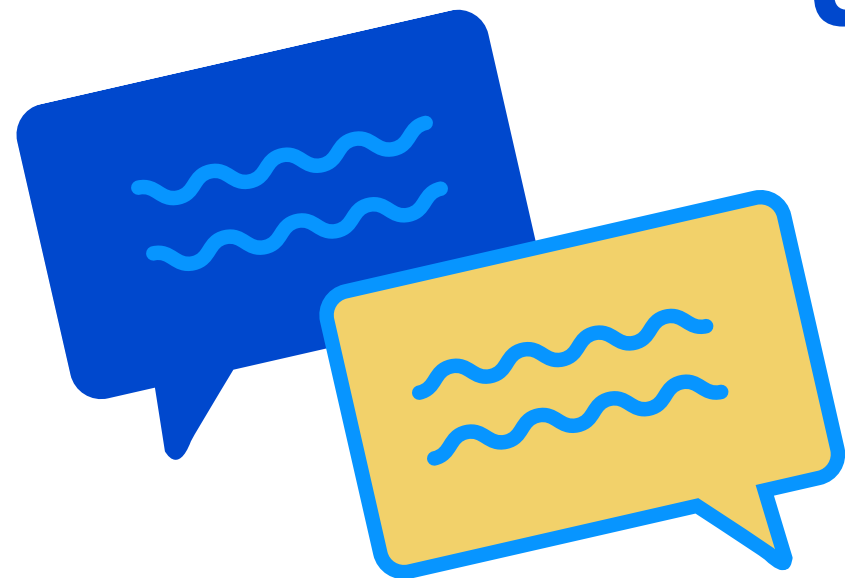
**4**  
out of  
**10**

Ranked this as a  
**top 3 improvement**  
they'd like to see  
in a new campus.



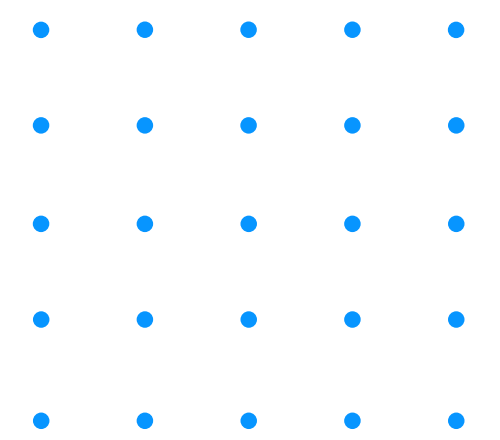


The community has  
**three primary concerns**  
to expanding and moving.





# #1: Paid, Private Busing



## Concern

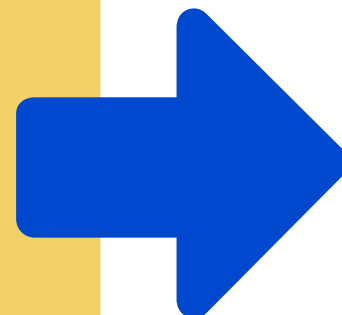
Financial burden placed on current families who use the bus



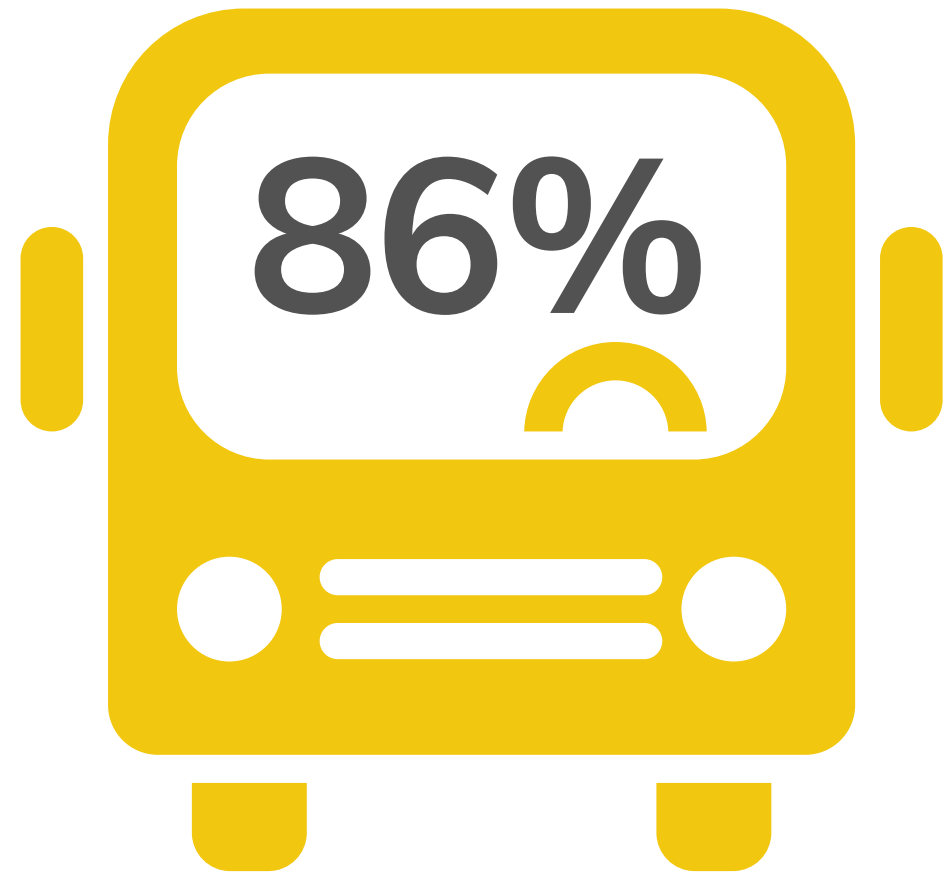
## Opportunity to Explore

Is it possible for ISLA families who currently bus to be temporarily exempt from bus fees for a certain time period?

Paid busing could become a barrier to entry for low income families who wish to give their child the benefits of an ISLA education



Can we explore grants, scholarships and reduced rate plans for low income families who need bus service?



Respondents who said they would be **MORE LIKELY** to support paid busing if it meant ISLA could address key improvements to the curriculum and facility

Respondents who said they would be **MORE LIKELY** to support paid busing if the bus stop is **within walking distance** from their house (vs. satellite stop)



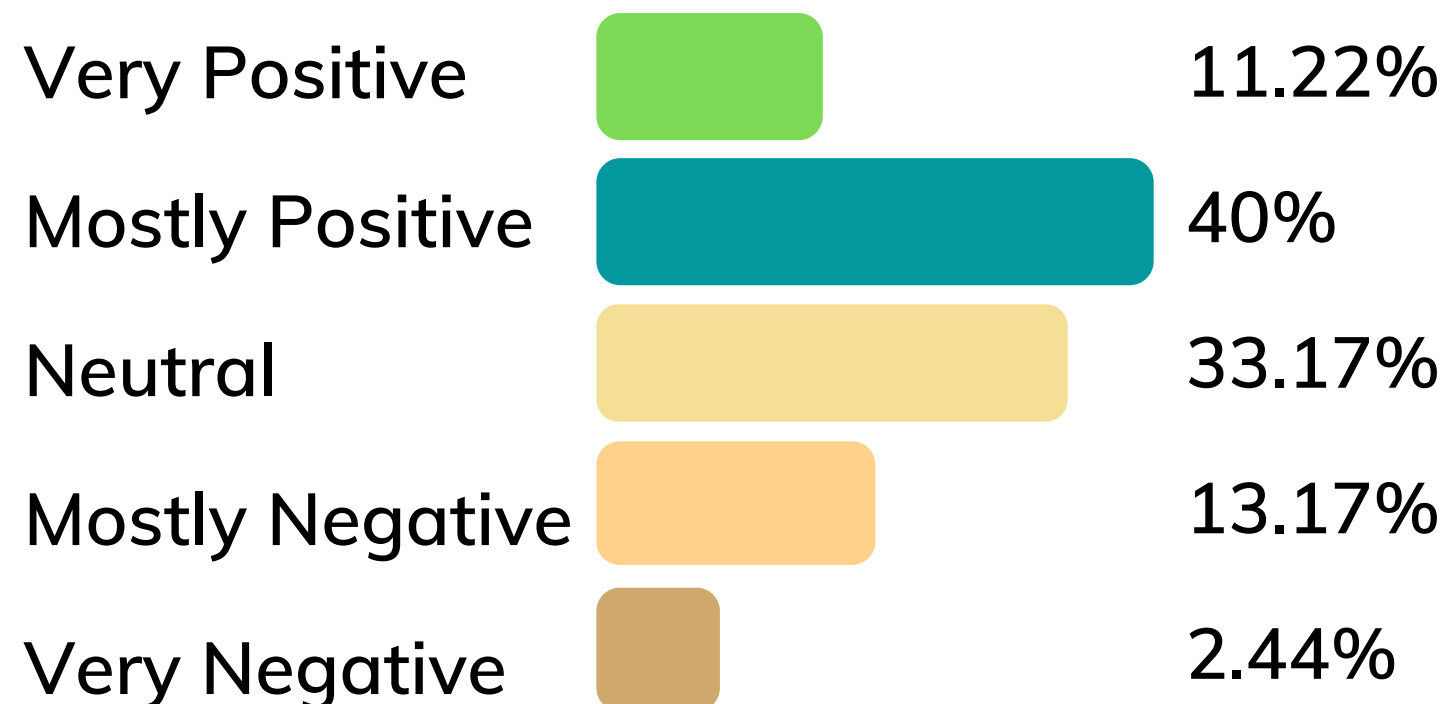


## #2: Sense of Community



Strategies to protect and nurture our special community:

Most respondents believe that ISLA's unique and cherished sense of community would remain strong after expansion.



- Responsible, gradual growth over time
- Celebrate and strengthen ISLA's beloved traditions
- Empower the community to brainstorm ways to champion the ISLA spirit amid growth



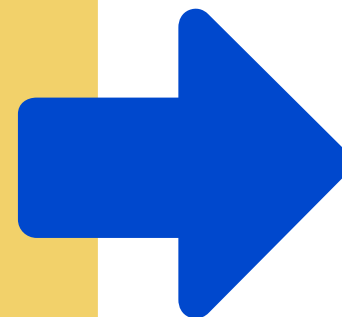
# #3: Relationship with Juntos

Juntos is a Spanish immersion continuation program and fellow IB World School that begins at Hopkins North Junior High.



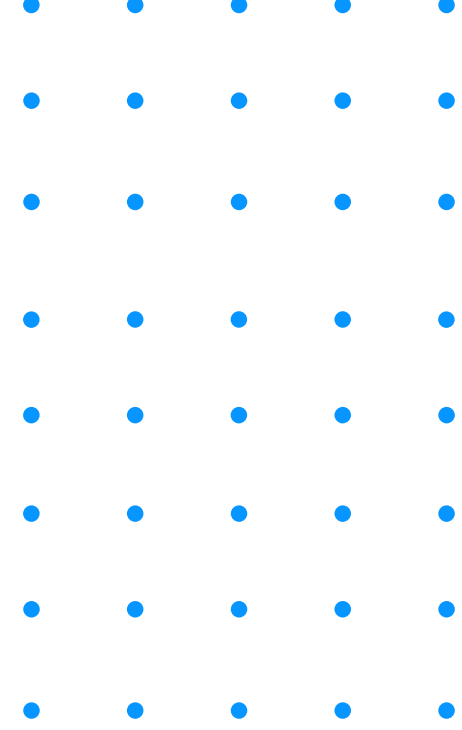
## Concern

Moving out of district would impact ISLA's relationship with Juntos and students will lose the ability to easily transition into the Juntos program.

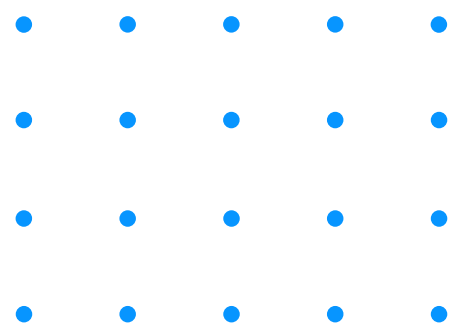


## Opportunity to Explore

ISLA's location is independent of Hopkins' enrollment policies for Juntos, but understanding the value Juntos provides to our students, the School Board is pursuing an agreement with Hopkins to formalize matriculation.

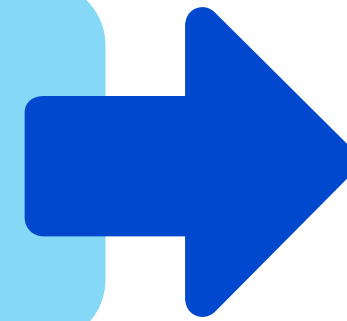


# What's Next?



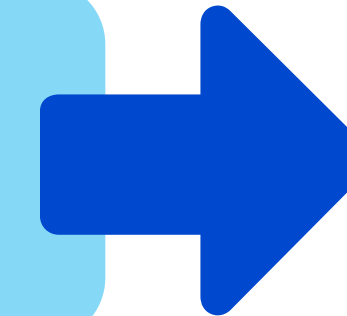
Special Board Meeting\*

\*Closed session



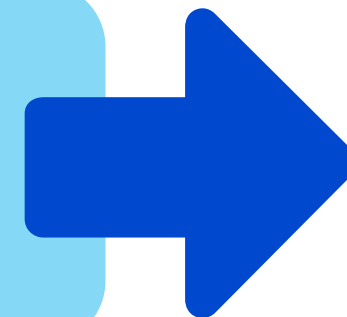
September 9

Listening Session for  
School Move + Expansion



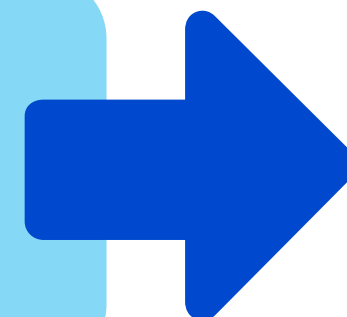
September 10

Board Meeting



September 15

Sign Purchase Agreement  
on New Building



Q4 2020





We may not have all the answers yet...  
but we do have  
**each other.**

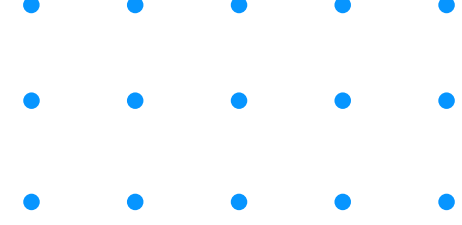
We are excited to move forward,  
**together.**

**¡Somos ISLA!**

**¡Sí se puede!**

**¡Avanzamos!**





# Questions?



**Send building feedback to:**

**[building@isla.school](mailto:building@isla.school)**

